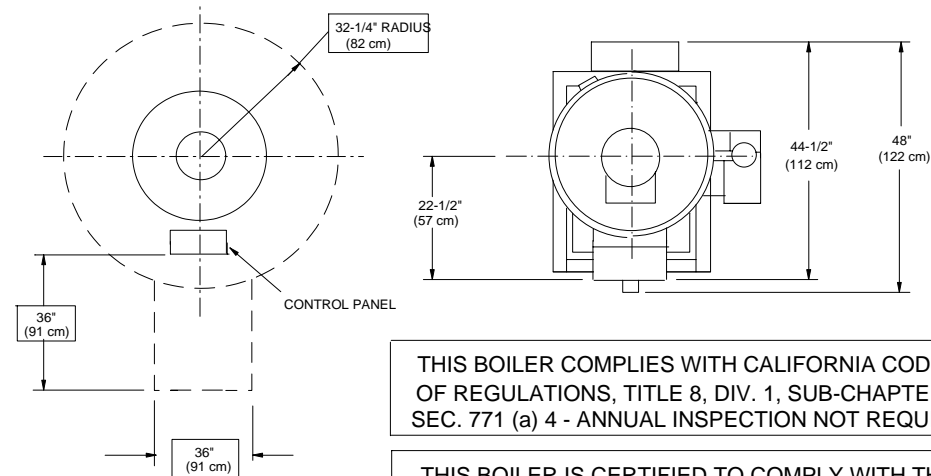


NOTES

1. 9.5 HORSEPOWER BOILER WITH STAMPED M.A.W.P. OF 100PSIG, BUILT IN ACCORDANCE WITH ASME POWER BOILER CODE SECTION I, "S" STAMPED AND NATIONAL BOARD REGISTERED. U.L. LISTED
2. INPUT 399,000 BTU/HR OUTPUT 332,000 BTU/HR
3. HEATING SURFACE 55 SQ. FT.
4. STEAM OUTPUT 330 LB/HR FROM & AT 212F
5. NATURAL GAS FIRED - REQUIRES INLET PRESSURE OF 8" - 14" W.C.
6. ELECTRICAL SUPPLY REQUIRED - 120V/1PH/20A
7. STANDARD BOILER INCLUDES CONDENSATE RETURN/FEED TANK, FEED PUMP, CHECK VALVES, BLOWDOWN VALVES AND 100 PSIG SAFETY VALVE.
8. INSTALLATION TO BE MADE IN ACCORDANCE WITH NATIONAL FUEL GAS CODE, NATIONAL ELECTRICAL CODE AND ALL APPLICABLE LOCAL AND STATE CODES.
9. WATER VOLUME
 PRESSURE VESSEL - 16 GALLONS
 JACKET (RETURN TANK) - 23 GALLONS
10. REFER TO PIPING DIAGRAM FOR ADDITIONAL INFORMATION.
11. SHIPPING WEIGHT - 1595 LB

36" DIMENSIONS SHOWN THUS ARE REQUIRED MINIMUM CLEARANCES FOR ACCESS AND/OR TO COMBUSTIBLE SURFACES

RECOMMENDED CLEARANCES



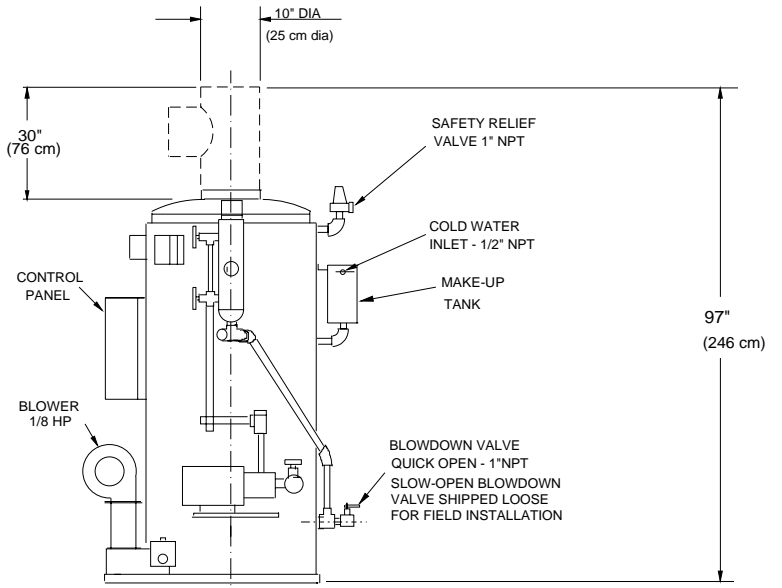
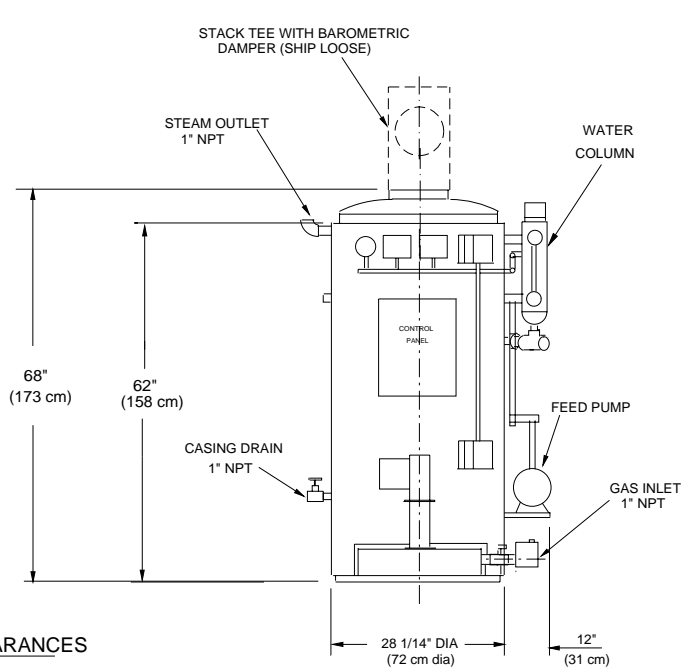
36" DIMENSIONS SHOWN THUS ARE REQUIRED MINIMUM CLEARANCES FOR ACCESS AND/OR TO COMBUSTIBLE SURFACES

THIS BOILER COMPLIES WITH CALIFORNIA CODE OF REGULATIONS, TITLE 8, DIV. 1, SUB-CHAPTER 2 SEC. 771 (a) 4 - ANNUAL INSPECTION NOT REQUIRED

THIS BOILER IS CERTIFIED TO COMPLY WITH THE REQUIREMENTS OF RULE 1146.2 OF THE SOUTH COAST AIR QUALITY MANAGEMENT DISTRICT

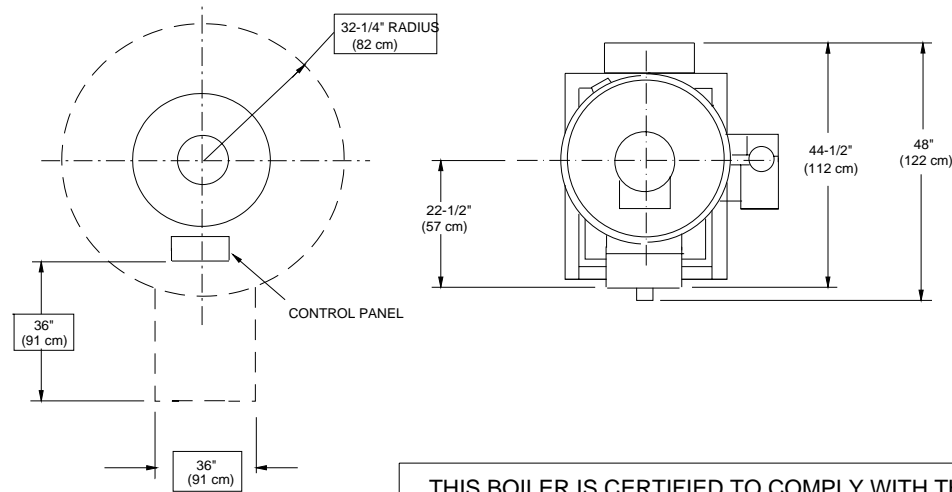
ThermoSteam Systems, Inc.

DWN	TNR	DATE	10/11/00	TITLE	LN-9.5 BOILER DIMENSIONS, CAL. SPECIAL	
REV	TNR	DATE	5/28/02	SCALE	NTS	DWG. NO. DIM-LN95-005A



- NOTES**
- 10 HORSEPOWER BOILER WITH STAMPED M.A.W.P. OF 150PSIG, BUILT IN ACCORDANCE WITH ASME POWER BOILER CODE SECTION I, "S" STAMPED AND NATIONAL BOARD REGISTERED. U.L. LISTED
 - INPUT 420,000 BTU/HR OUTPUT 336,000 BTU/HR
 - HEATING SURFACE 55 SQ. FT.
 - STEAM OUTPUT 345 LB/HR FROM & AT 212F
 - NATURAL GAS FIRED - REQUIRES INLET PRESSURE OF 8" - 14" W.C.
 - ELECTRICAL SUPPLY REQUIRED - 120V/1PH/20A
 - STANDARD BOILER INCLUDES CONDENSATE RETURN/FEED TANK, FEED PUMP, CHECK VALVES, BLOWDOWN VALVES AND 125 PSIG SAFETY VALVE.
 - INSTALLATION TO BE MADE IN ACCORDANCE WITH NATIONAL FUEL GAS CODE, NATIONAL ELECTRICAL CODE AND ALL APPLICABLE LOCAL AND STATE CODES.
 - WATER VOLUME
PRESSURE VESSEL - 16 GALLONS
JACKET (RETURN TANK) - 23 GALLONS
 - REFER TO PIPING DIAGRAM FOR ADDITIONAL INFORMATION.
 - SHIPPING WEIGHT - 1595 LB

RECOMMENDED CLEARANCES

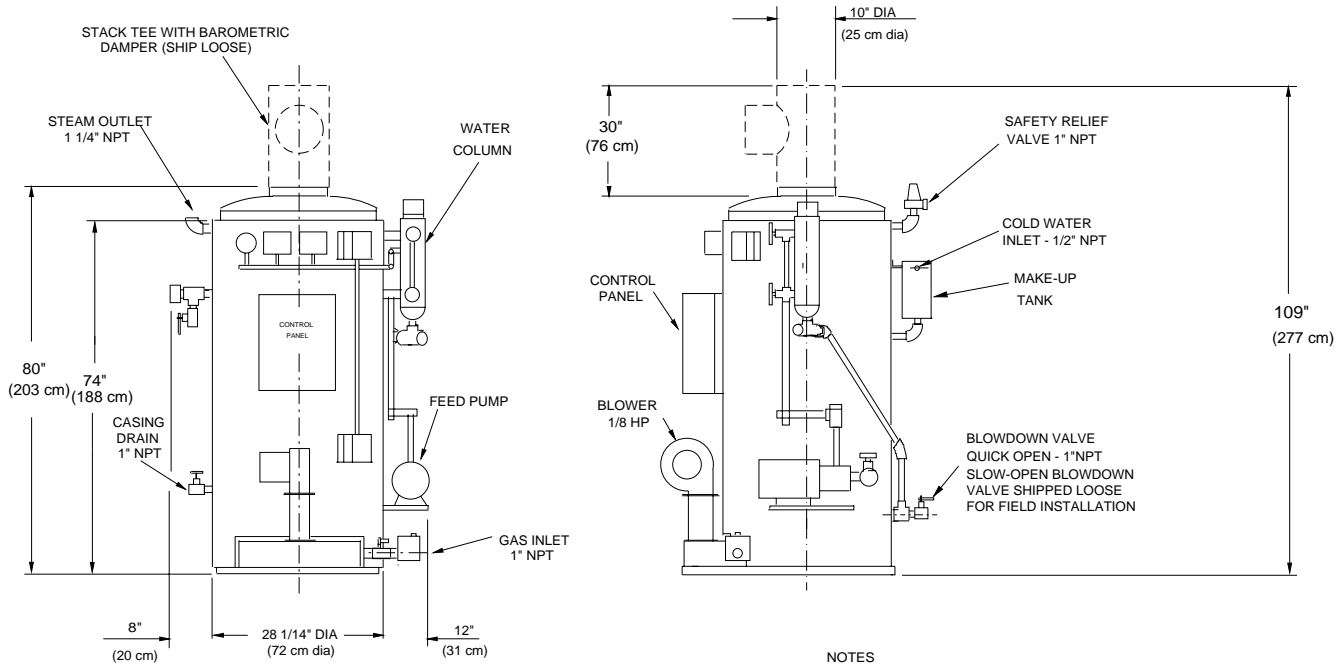


36" DIMENSIONS SHOWN THUS ARE REQUIRED MINIMUM CLEARANCES FOR ACCESS AND/OR TO COMBUSTIBLE SURFACES

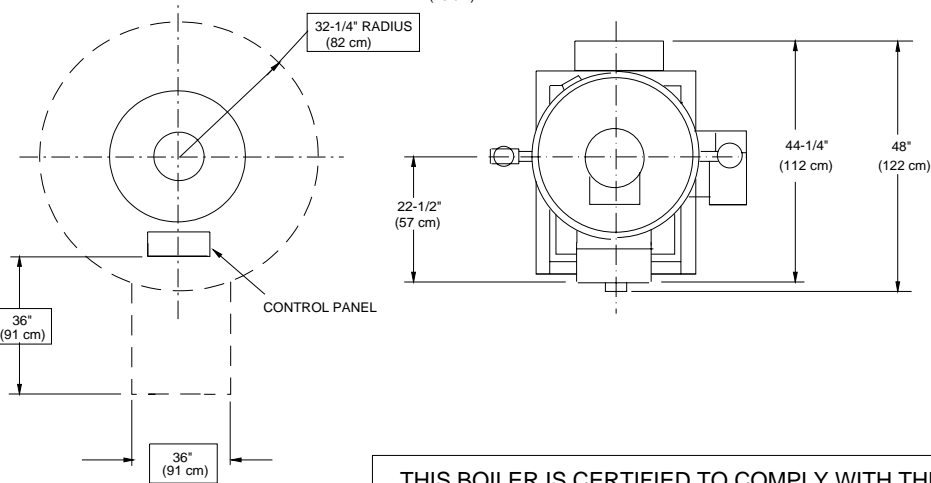
THIS BOILER IS CERTIFIED TO COMPLY WITH THE REQUIREMENTS OF RULE 1146.2 OF THE SOUTH COAST AIR QUALITY MANAGEMENT DISTRICT

ThermoSteam Systems, Inc.

DWN	DATE	TITLE		
TNR	10/11/00	LN-10 BOILER DIMENSIONS		
REV	DATE	SCALE	DWG. NO.	
TNR	5/28/02	NTS	DIM-LN10-005	



MINIMUM CLEARANCES TO COMBUSTIBLE SURFACES



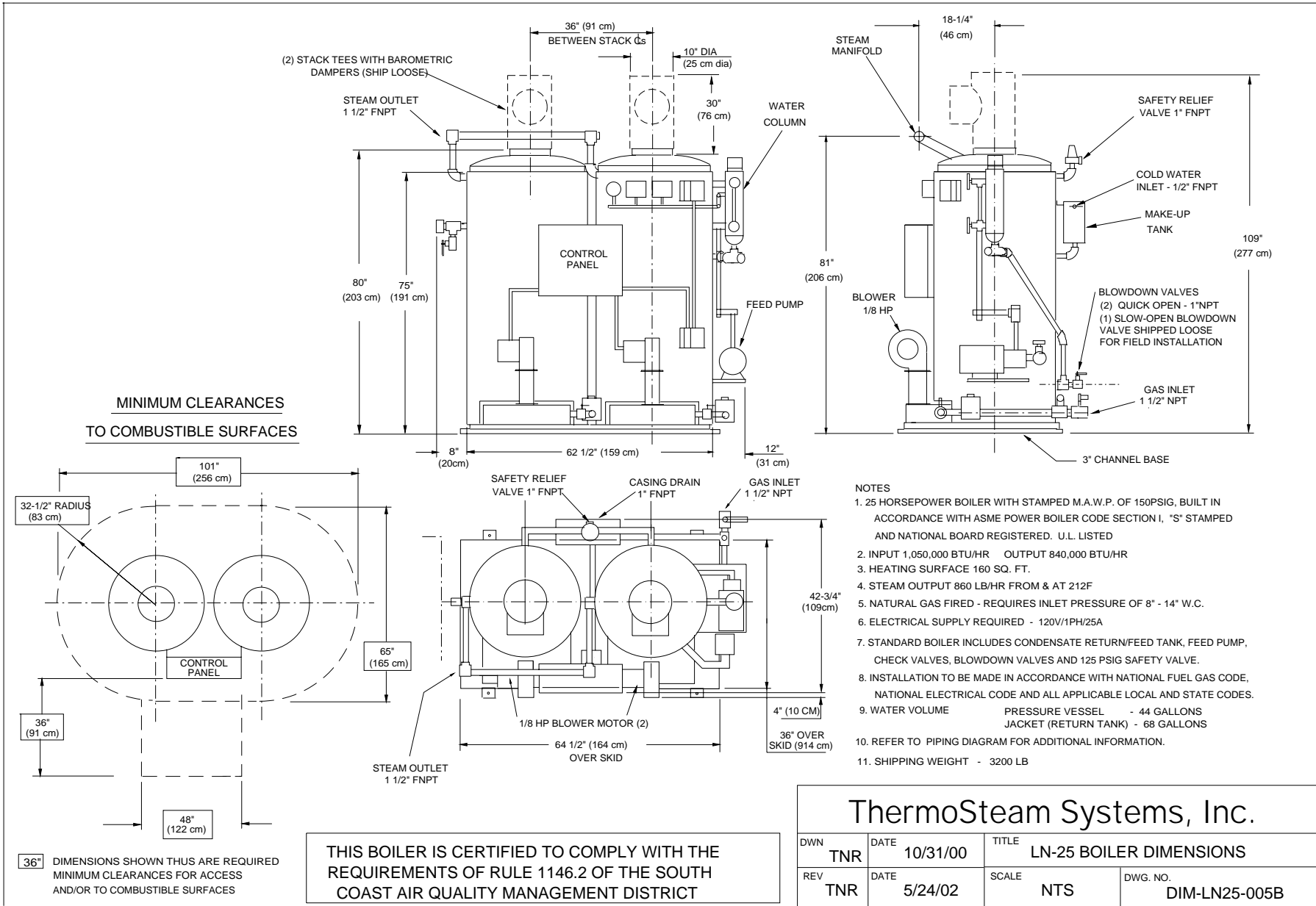
- NOTES**
- 15 HORSEPOWER BOILER WITH STAMPED M.A.W.P. OF 150PSIG, BUILT IN ACCORDANCE WITH ASME POWER BOILER CODE SECTION I, "S" STAMPED AND NATIONAL BOARD REGISTERED. U.L. LISTED
 - INPUT 630,000 BTU/HR OUTPUT 504,000 BTU/HR
 - HEATING SURFACE 80 SQ. FT.
 - STEAM OUTPUT 520 LB/HR FROM & AT 212F
 - NATURAL GAS FIRED - REQUIRES INLET PRESSURE OF 8" - 14" W.C.
 - ELECTRICAL SUPPLY REQUIRED - 120V/1PH/20A
 - STANDARD BOILER INCLUDES CONDENSATE RETURN/FEED TANK, FEED PUMP, CHECK VALVES, BLOWDOWN VALVES AND 125 PSIG SAFETY VALVE.
 - INSTALLATION TO BE MADE IN ACCORDANCE WITH NATIONAL FUEL GAS CODE, NATIONAL ELECTRICAL CODE AND ALL APPLICABLE LOCAL AND STATE CODES.
 - WATER VOLUME PRESSURE VESSEL - 22 GALLONS
JACKET (RETURN TANK) - 34 GALLONS
 - REFER TO PIPING DIAGRAM FOR ADDITIONAL INFORMATION.
 - SHIPPING WEIGHT - 1755 LB

THIS BOILER IS CERTIFIED TO COMPLY WITH THE REQUIREMENTS OF RULE 1146.2 OF THE SOUTH COAST AIR QUALITY MANAGEMENT DISTRICT

ThermoSteam Systems, Inc.

DWN	TNR	DATE	8/30/00	TITLE	LN-15 BOILER DIMENSIONS	
REV	TNR	DATE	5/28/02	SCALE	NTS	DWG. NO. DIM-LN15-005A

36" DIMENSIONS SHOWN THUS ARE REQUIRED MINIMUM CLEARANCES FOR ACCESS AND/OR TO COMBUSTIBLE SURFACES



- NOTES**
- 25 HORSEPOWER BOILER WITH STAMPED M.A.W.P. OF 150PSIG, BUILT IN ACCORDANCE WITH ASME POWER BOILER SECTION I, "S" STAMPED AND NATIONAL BOARD REGISTERED. U.L. LISTED
 - INPUT 1,050,000 BTU/HR OUTPUT 840,000 BTU/HR HEATING SURFACE 160 SQ. FT.
 - STEAM OUTPUT 860 LB/HR FROM & AT 212F
 - NATURAL GAS FIRED - REQUIRES INLET PRESSURE OF 8" - 14" W.C.
 - ELECTRICAL SUPPLY REQUIRED - 120V/1PH/25A
 - STANDARD BOILER INCLUDES CONDENSATE RETURN/FEED TANK, FEED PUMP, CHECK VALVES, BLOWDOWN VALVES AND 125 PSIG SAFETY VALVE.
 - INSTALLATION TO BE MADE IN ACCORDANCE WITH NATIONAL FUEL GAS CODE, NATIONAL ELECTRICAL CODE AND ALL APPLICABLE LOCAL AND STATE CODES.
 - WATER VOLUME PRESSURE VESSEL - 44 GALLONS JACKET (RETURN TANK) - 68 GALLONS
 - REFER TO PIPING DIAGRAM FOR ADDITIONAL INFORMATION.
 - SHIPPING WEIGHT - 3200 LB

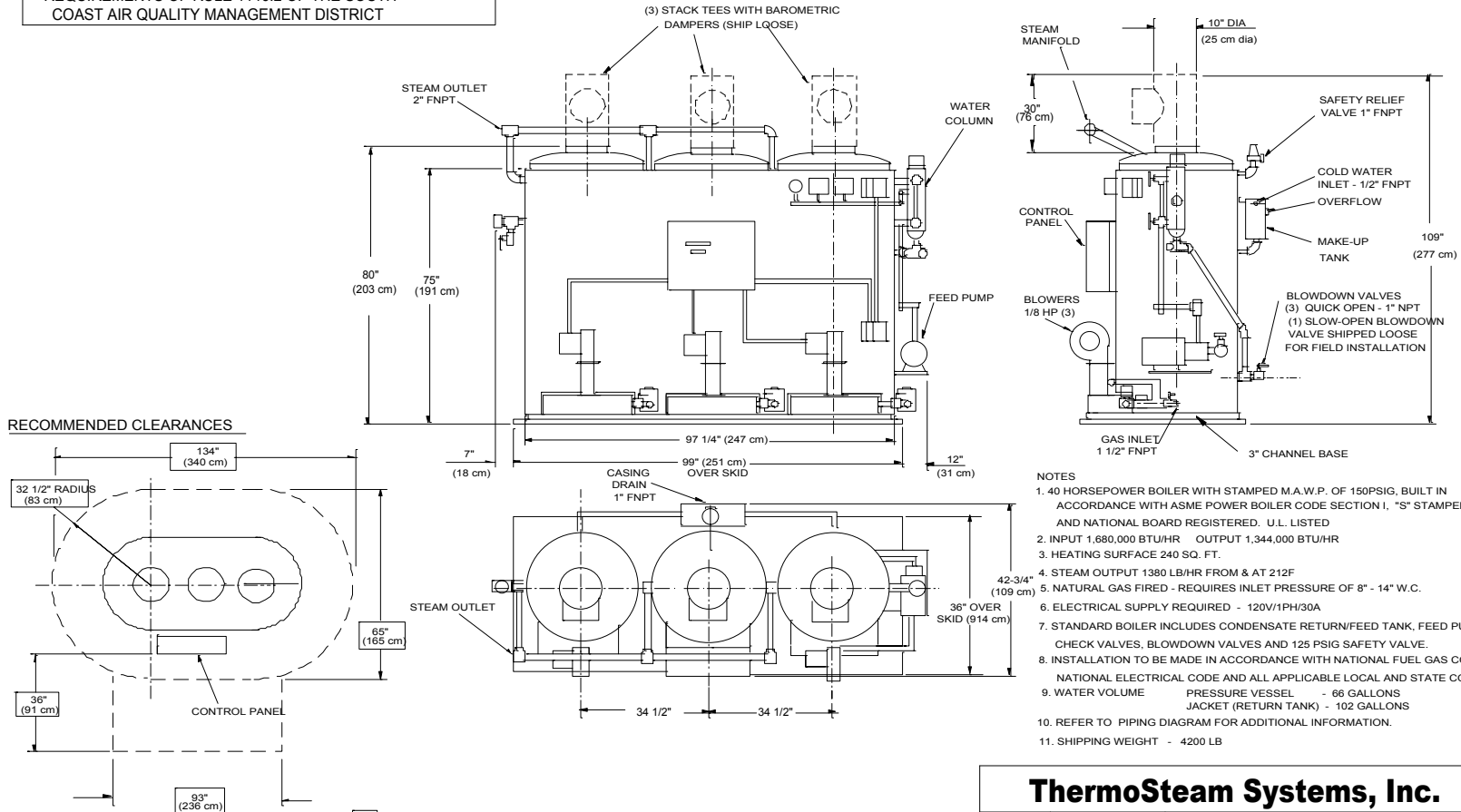
ThermoSteam Systems, Inc.

DWN	TNR	DATE	10/31/00	TITLE	LN-25 BOILER DIMENSIONS	
REV	TNR	DATE	5/24/02	SCALE	NTS	DWG. NO. DIM-LN25-005B

THIS BOILER IS CERTIFIED TO COMPLY WITH THE REQUIREMENTS OF RULE 1146.2 OF THE SOUTH COAST AIR QUALITY MANAGEMENT DISTRICT

36" DIMENSIONS SHOWN THUS ARE REQUIRED MINIMUM CLEARANCES FOR ACCESS AND/OR TO COMBUSTIBLE SURFACES

THIS BOILER IS CERTIFIED TO COMPLY WITH THE REQUIREMENTS OF RULE 1146.2 OF THE SOUTH COAST AIR QUALITY MANAGEMENT DISTRICT



- NOTES
- 40 HORSEPOWER BOILER WITH STAMPED M.A.W.P. OF 150PSIG, BUILT IN ACCORDANCE WITH ASME POWER BOILER CODE SECTION I, "S" STAMPED AND NATIONAL BOARD REGISTERED. U.L. LISTED
 - INPUT 1,680,000 BTU/HR OUTPUT 1,344,000 BTU/HR
 - HEATING SURFACE 240 SQ. FT.
 - STEAM OUTPUT 1380 LB/HR FROM & AT 212F
 - NATURAL GAS FIRED - REQUIRES INLET PRESSURE OF 8" - 14" W.C.
 - ELECTRICAL SUPPLY REQUIRED - 120V/1PH/30A
 - STANDARD BOILER INCLUDES CONDENSATE RETURN/FEED TANK, FEED PUMP, CHECK VALVES, BLOWDOWN VALVES AND 125 PSIG SAFETY VALVE.
 - INSTALLATION TO BE MADE IN ACCORDANCE WITH NATIONAL FUEL GAS CODE, NATIONAL ELECTRICAL CODE AND ALL APPLICABLE LOCAL AND STATE CODES.
 - WATER VOLUME PRESSURE VESSEL - 66 GALLONS
JACKET (RETURN TANK) - 102 GALLONS
 - REFER TO PIPING DIAGRAM FOR ADDITIONAL INFORMATION.
 - SHIPPING WEIGHT - 4200 LB

ThermoSteam Systems, Inc.

DWN	TNR	DATE	10/31/00	TITLE	LN-40 BOILER DIMENSIONS	
REV	TNR	DATE	8/23/02	SCALE	NTS	DWG. NO. DIM-LN40-005B

36" DIMENSIONS SHOWN THIS ARE REQUIRED MINIMUM CLEARANCES FOR ACCESS AND/OR TO COMBUSTIBLE SURFACES