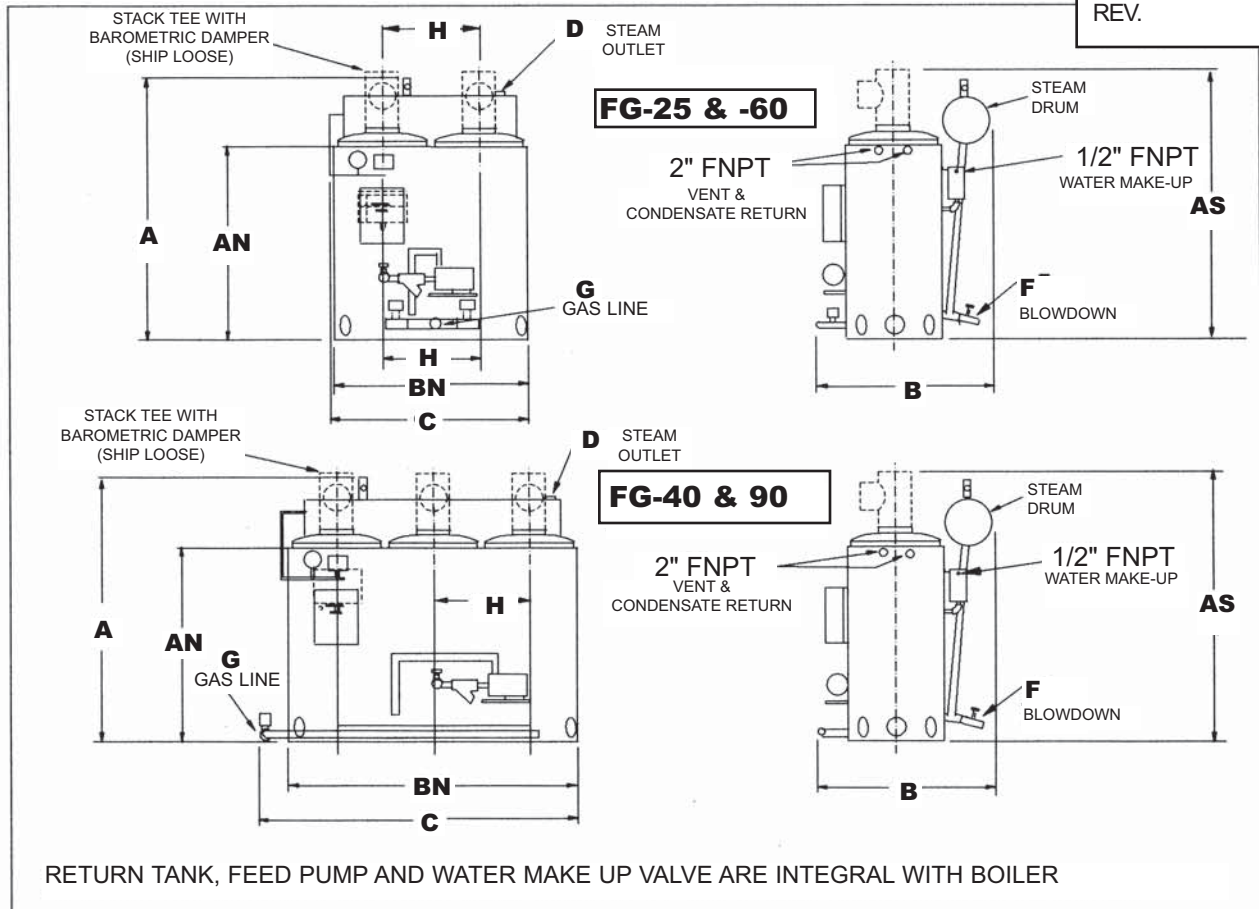


DIMENSIONS - MULTI COIL BOILERS

MC-200A

MAR. 9, 2001
REV.



ALL DIMENSIONS ARE GIVEN IN INCHES

MODEL	A	AN	AS	B	BN	C	D	F	G	H	J
FG-25	88	60	96	57	54	70	1 1/2	2 - 1	1 1/2	26	2-10
FG40	88	60	96	57	80	90	2	3 - 1	2	26	3-10
FG-60	92	72	109	84	79	93	2 1/2	2 - 1	2 1/2	39	2 - 14
FG-90	92	72	109	84	118	132	4	3 - 1	3	39	3 - 14

THERMOSTEAM RESERVES THE RIGHT TO CHANGE SPECIFICATIONS WITHOUT NOTICE

THERMOSTEAM SYSTEMS, INC.

20521 EARLGATE ST. DIAMOND BAR CA 91789

PHONE 909-595-7919

FAX 909-595-7408

MODELS AND CAPACITIES MULTI-COIL BOILERS

MC-200
AUG. 21, 2000
REV.

MODEL	BHP	Steam Del. LB./HR F & A 212 °F	Input BTU/HR	Output BTU/HR	Heating Surface Sq. Ft	Water Volume Gallons		Pump Motor HP	Ship Weight LBS Approx.
						Boiler	Jacket		
FG-25	25	860	1,050,000	1,008,000	150	37	79	3/4	2450
FG-40	40	1380	1,680,000	1,344,000	225	55	129	1 1/2	3300
FG-60	60	2070	2,520,000	2,016,000	352	125	156	2	5200
FG-90	90	3105	3,780,000	3,024,000	528	168	240	3	8100

Models FG-25* and FG-60 are designed with a dual water tube assembly. Models FG-40 and FG-90 have a triple water tube assembly. All the above models use an external steam drum.

Boiler input is based on natural gas, 1000 Btu/cu. ft. at sea level and 80% efficiency. Operation at elevations above 2000 feet requires an input/output derate of 4% per 1000 ft.

ThermoSteam boilers are built and stamped to ASME Power Boiler Code, Section I, and equipped with 125 psig safety relief valve(s). Boilers designed for higher operating pressures (through 300 psig) are available at additional cost.

National Board registration is standard

Heating surface is 5.6 square feet per boiler horsepower minimum.

THERMOSTEAM RESERVES THE RIGHT TO CHANGE SPECIFICATIONS WITHOUT NOTICE

THERMOSTEAM SYSTEMS, INC.

20521 EARLGATE ST, DIAMOND BAR CA 91789

PHONE: (909) 595-7919

FAX: (909) 595-7408